

ESPRIMO Q5XX / Q9XX

End-of-Lifetime Dismantling Instructions

These instructions are for the complete dismantling of a Fujitsu product. All materials can thereby be disposed of according to their provision in the EC directive 2002/96/EC (Waste Electrical and Electronic Equipment (WEEE)).

Product group: Desktop

Model: ESPRIMO Q5XX / Q9XX

Materials which must be disposed of in a special manner		
Description	Remarks	Number
Printed circuit boards With a surface area greater than 10 cm ²	Mainboard	1
Batteries	Lithium button batteries CR2032 (included on the mainboard)	1
Components containing mercury	Not contained	
Liquid crystal displays (if applicable, together with the casing) with a surface area greater than 100 square centimetres and backlit displays with gas discharge lamps	Not contained	
Cathode ray tubes	Not contained	
PCB containing (PCB: polychlorinated biphenyls) capacitors	Not contained	
Electrolytic capacitors which contain critical substances (height > 25 mm; diameter: > 25 mm or proportional similar volumes).	Mainboard / integrated power supply	1
External electrical cables	Not permanently connected to the device	
Gas discharge lamps	Not contained	
Plastics which contain brominated flame retardant	Not contained in mechanical parts	
Toner cartridges, liquid and paste-like, and colour toner	Not contained	
Asbestos waste and components which contain asbestos	Not contained	
Components which contain fire-proof ceramic fibres	Not contained	
Components which contain radioactive substances	Not contained	
Tools required		
<ul style="list-style-type: none"> • Cross-head screwdriver (PoziDrive PB 192) • Slotted screwdriver (PB 100/2 0.6 x 4) 		

Dismantling process

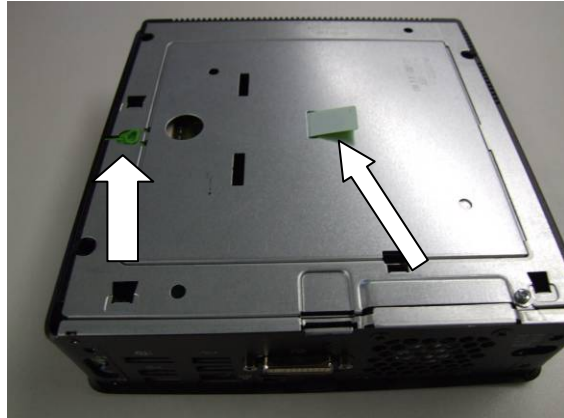
1. Open the casing
2. Open the maintenance cover
3. Unscrew the frame
4. Disconnect the WLAN antennas, lift the mainboard
5. Swivel and tilt the mainboard
6. Disconnect all cables
7. Remove the mainboard and IO shield gaskets
8. Open the upper chassis cover
9. Lift the optical drive
10. Remove the optical drive
11. Lift out the Bluetooth module
12. Detach the WLAN antennas
13. Remove the WLAN antennas
14. Unscrew and remove the fan
15. Remove the eject button
16. Remove the power button
17. Unlock the hard disk
18. Remove the hard disk
19. Unlock and remove the RAM
20. Unlock the WLAN module
21. Remove the WLAN module
22. Unscrew and remove the heat sink
23. Open the CPU socket locking device (1)
24. Open the CPU socket locking device (2)
25. Open the CPU socket locking device (3)
26. Remove the CPU and close the socket
27. Remove the battery (1)
28. Remove the battery (2)
29. Remove the power supply cover
30. Remove the marked capacitor

Step 1 – Open the casing



Press the unlocking hook upwards, push the cover forwards and lift it out.

Step 2 – Open the maintenance cover



Press the green locking hook outwards and lift the cover by the green tab.

Step 3 – Unscrew the frame



Undo the 4 marked screws and lift out the frame.

Step 4 – Disconnect the WLAN antennas, lift the mainboard



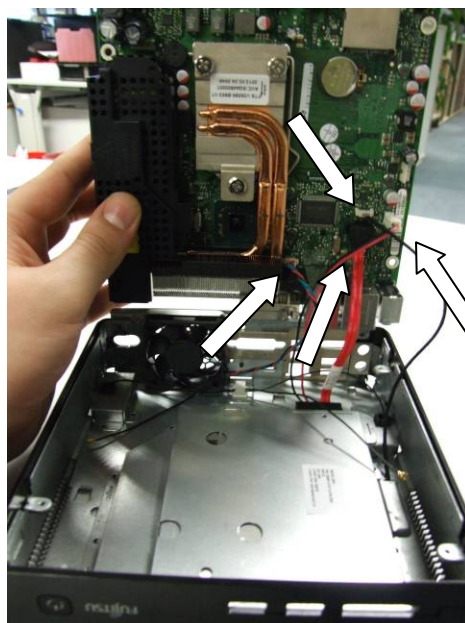
Disconnect both WLAN antennas from the module and lift up the mainboard.

Step 5 – Swivel and tilt the mainboard

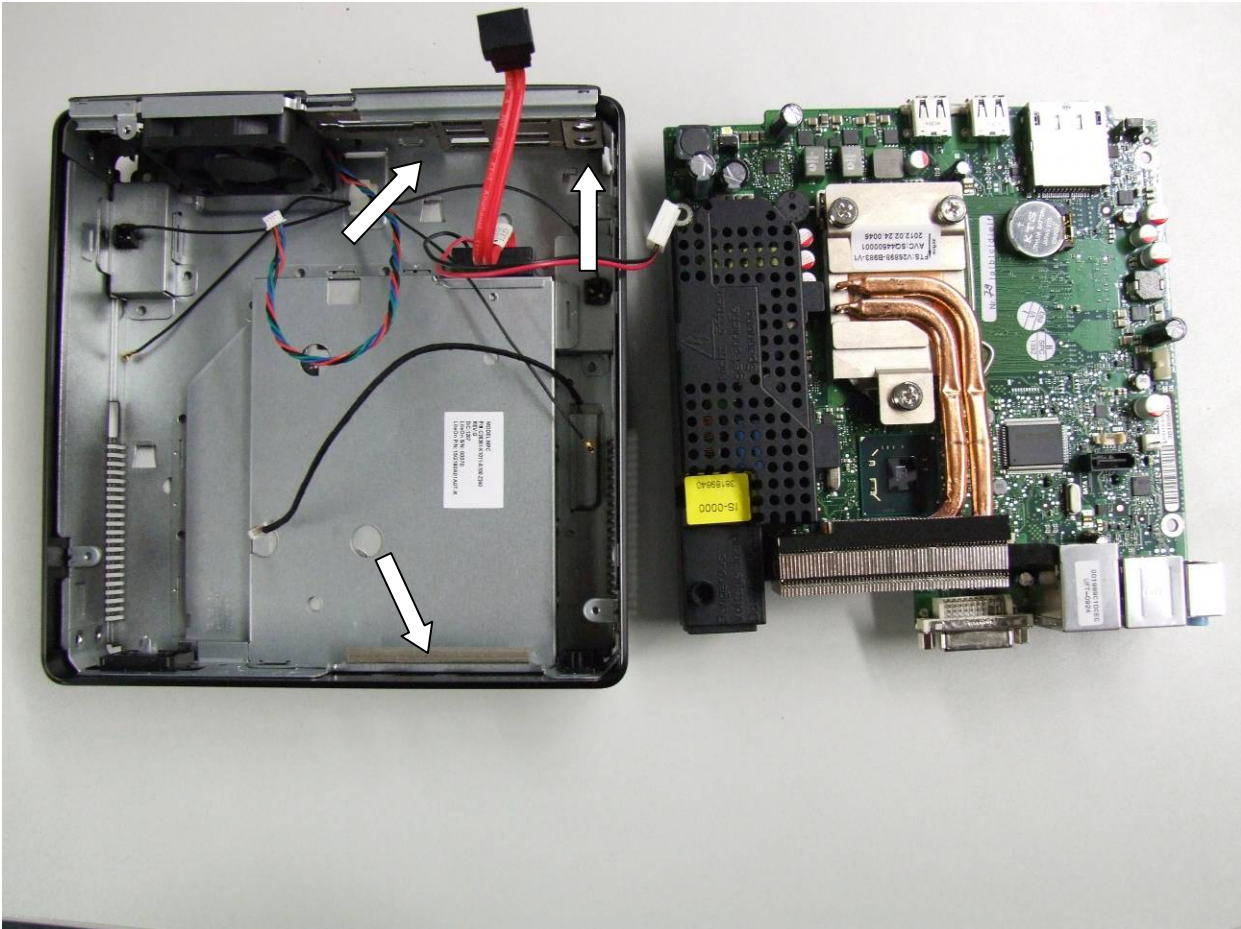


Swivel the mainboard in the direction shown by the arrow and tilt upwards at the same time.

Step 6 – Disconnect all cables



Step 7 – Remove the mainboard and IO shield gaskets



Take out the mainboard altogether and detach the IO shield gaskets from the casing with a screwdriver.

Step 8 – Open the upper chassis cover



The upper chassis cover can be opened in exactly the same way as the lower one.

Step 9 – Lift the optical drive



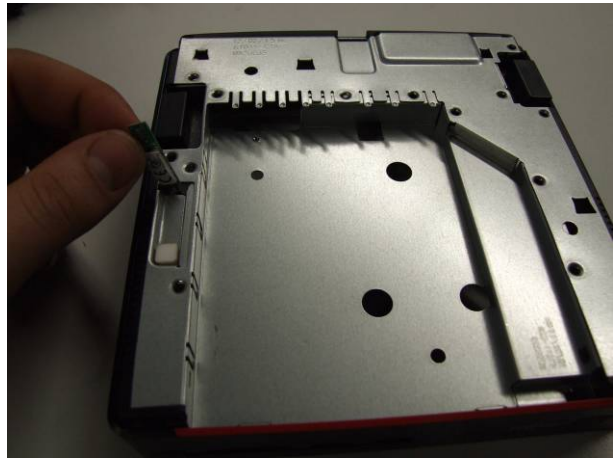
Lift up the drive.

Step 10 – Remove the optical drive



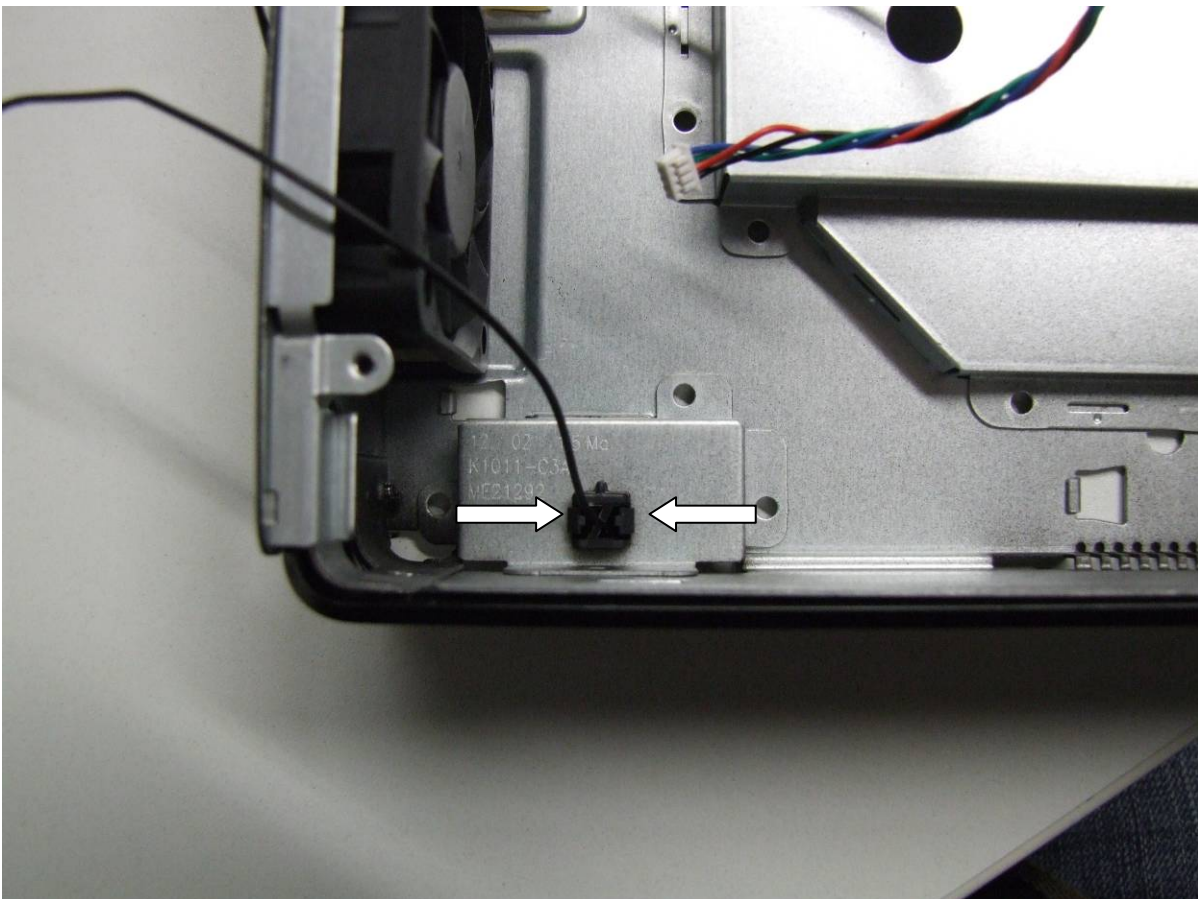
Take the drive including cables out of the holder.

Step 11 – Lift out the Bluetooth module



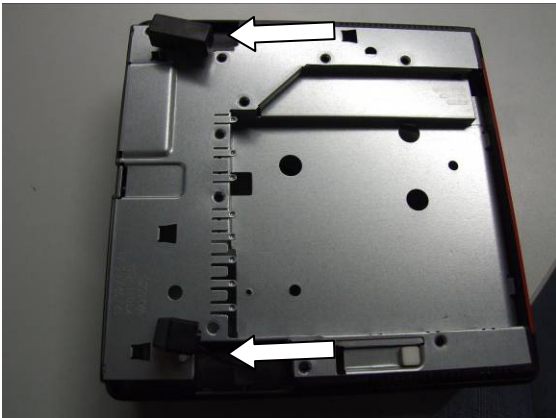
Detach the Bluetooth module from the adhesive area and remove with cable.

Step 12 – Detach the WLAN antennas



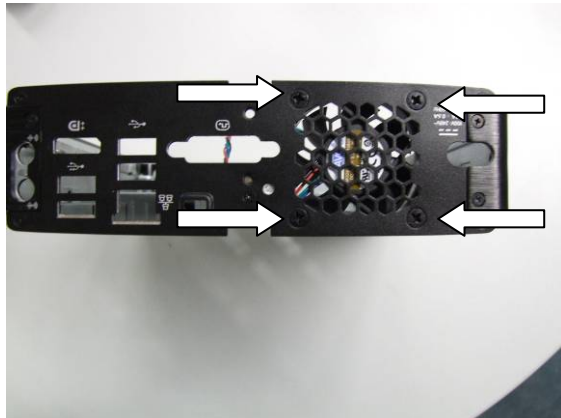
To remove the antennas, press the two lugs together as shown by the arrows and lift out the antenna.

Step 13 – Remove the WLAN antennas



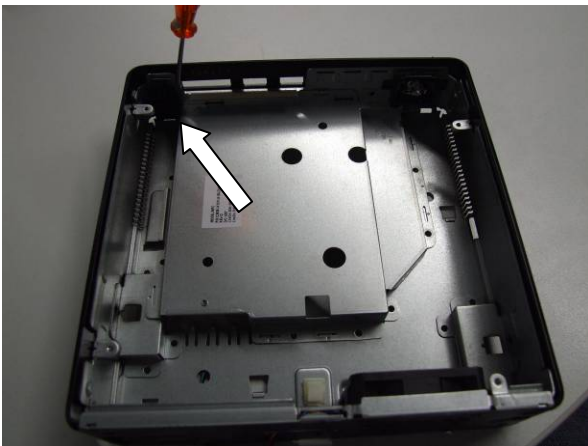
Lift out the antennas.

Step 14 – Unscrew and remove the fan



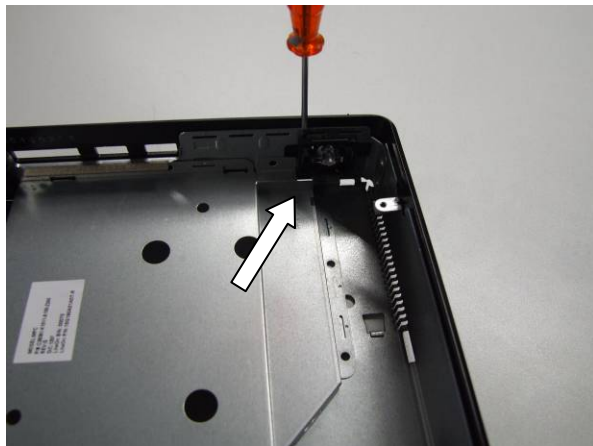
Undo the 4 marked screws and remove the fan from the inside.

Step 15 – Remove the eject button



Using a small screwdriver, lever the eject button out of the holder.

Step 16 – Remove the power button



Using a small screwdriver, lever the power button out of the holder.

Step 17 – Unlock the hard disk



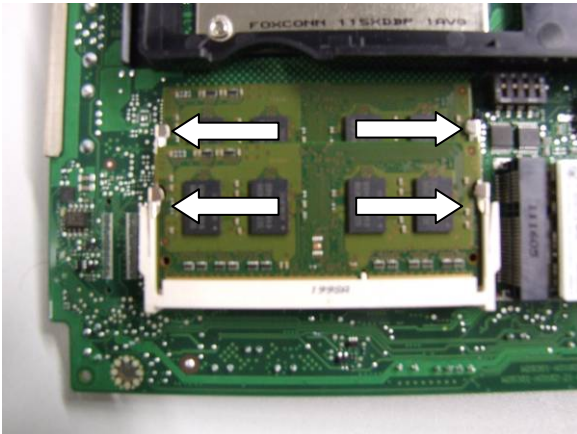
Press the small hard disk carrier downwards and at the same time push the hard disk in the direction indicated by the arrow.

Step 18 – Remove the hard disk



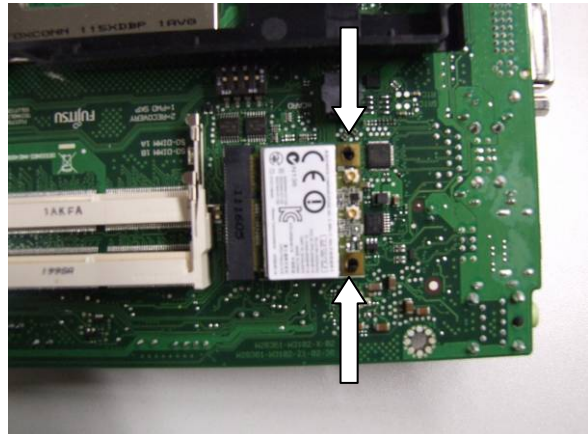
Lift out the hard disk.

Step 19 – Unlock and remove the main memory



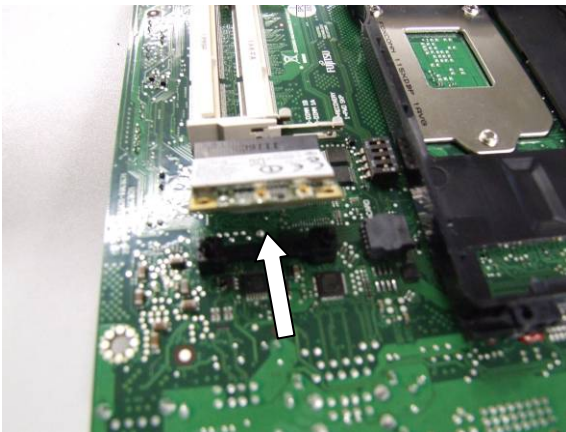
To unlock the main memory, press the tabs on the outer sides in the direction shown by the arrows and lift out the latch.

Step 20 – Unlock the WLAN module



Press the retaining hooks in the direction shown by the arrows.

Step 21 – Remove the WLAN module



Lift out the module.

Step 22 – Unscrew and remove the heat sink



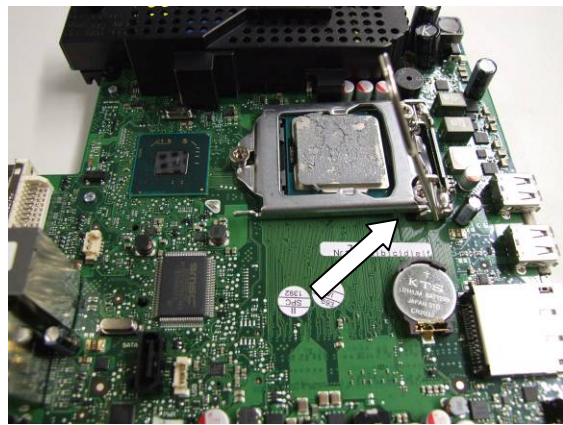
Undo the marked screws and lift out the heat sink.

Step 23 – Open the CPU socket locking device (1)



Press the CPU socket locking device downwards, keep it pressed and move it outwards.

Step 24 – Open the CPU socket locking device (2)



Lift up the CPU socket locking device.

Step 25 – Open the CPU socket locking device (3)



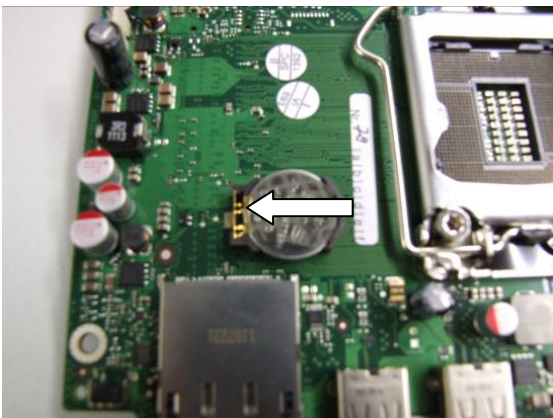
Pull back the CPU socket locking device.

Step 26 – Remove the CPU and close the socket



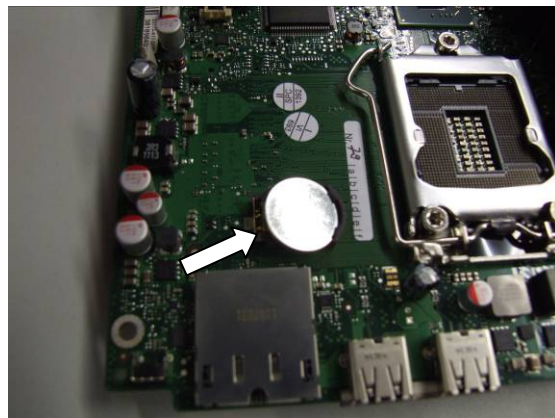
Take the CPU out of the socket and reclose the socket.

Step 27 – Remove the battery (1)



To remove the battery, press the metal holder outwards.

Step 28 – Remove the battery (2)

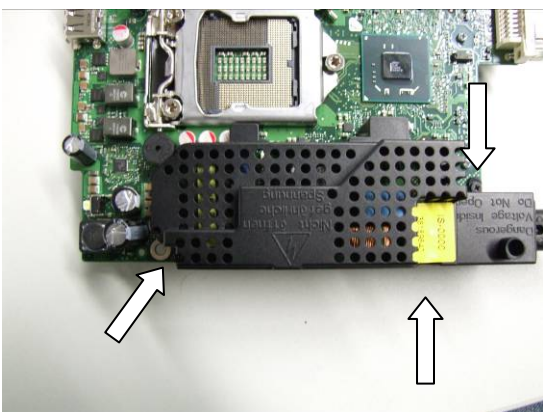


Remove the battery.

Step 29 – Remove the power supply cover

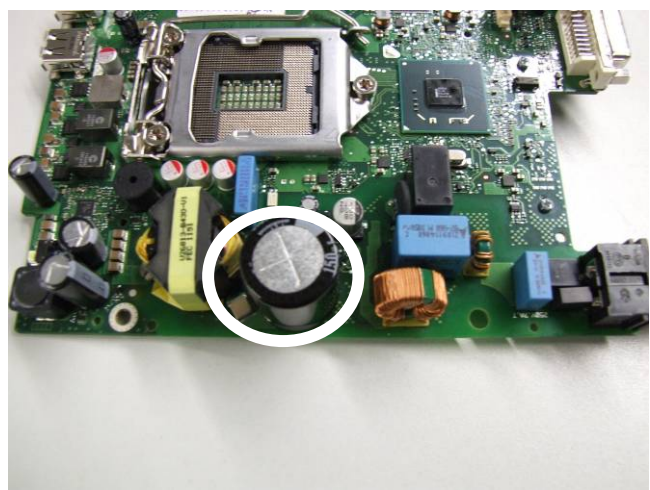


Beware, high voltage if the power cable is plugged in!



Remove the marked screws and take out the power supply cover.

Step 30 – Remove the marked capacitor



Remove the marked capacitor.

**Copyright**

© Fujitsu Technology Solutions 2012
04/2012

Published by

Fujitsu Technology Solutions GmbH
Mies-van-der-Rohe-Straße 8
80807 Munich, Germany

Contact

<http://ts.fujitsu.com/support>

All rights reserved, including intellectual property rights. Subject to technical alterations. Delivery subject to availability. No warranty is offered or liability accepted in regard of the completeness, correctness, or current applicability of any data or illustrations. Brand names may be protected trademarks of the respective manufacturer and/or protected by copyright. Use of these by third parties for their own purposes may constitute an infringement of the holders' rights. Further information can be found at http://ts.fujitsu.com/terms_of_use.html

Order No. Fujitsu Technology Solutions: A26361-K1011-Z350-1-19, edition 1